



Masibambane Secondary School

Kraaifontein, Cape Town, Western Cape

In 1999 the Bloekombos community in Kraaifontein took over a derelict government road camp on the Old Paarl Road (R101) to be used as a school. Initially the classrooms were housed in an existing prefabricated building and portal frame sheds, and classes had to be structured in shifts. Since then the school has gone through four phases of incremental development. Classrooms have been altered into administration areas, mobile classrooms were added, a passage was adapted to be used as a computer area for teachers and many ad hoc spatial revisions were carried out to fulfil growing demands.

In 2008, the Western Cape Education Department funded the school's governing body to build the much-needed administration facilities, library, hospitality classroom and additional nine classrooms. The community expressed a need for the double-storey structure to establish a 'front door' and public reception area that would support

their aspirations of the school as a community facility. The school has always been abuzz with activity and provides a platform for the qualitative improvement of learners' education, a study venue, and a play area throughout the day and year. It has also been a place for community functions and interaction. The project was workshopped with stakeholders from the school and the community to respond to these requirements.

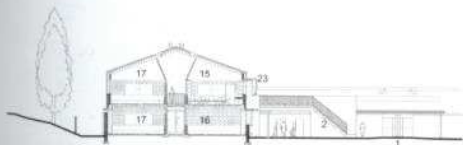
Spatial unity was achieved by relating each building to the central court. The foyer, library, principal's office and classroom access are orientated off this court. Seating areas and soft-landscaped edges to this north edge are provided for informal discussion and play. Shaded covered walkways edge the remainder of the court and shelter the classrooms and hall entrances, providing access to the secondary court spaces that connect to the sports field. The upper-level foyer with its display cabinets and pin boards is seen as an

Architects: Design Studio
Cape Town cc
Structural Engineers: J.T.L.
Structures cc
Mechanical Engineers: TrioCon
Electrical Engineers: TrioCon
Quantity Surveyor: Backeberg
Consulting Quantity Surveyors
Contractor: Granbuild
Occupational Health & Safety:
Milestone Management
Land Surveyor: David Hellig &
Abrahamse
Geotechnical Engineers: Kantey and
Templer
Photographer: Design Studio
Text: Jacqui Perrin



Context Plan Legend

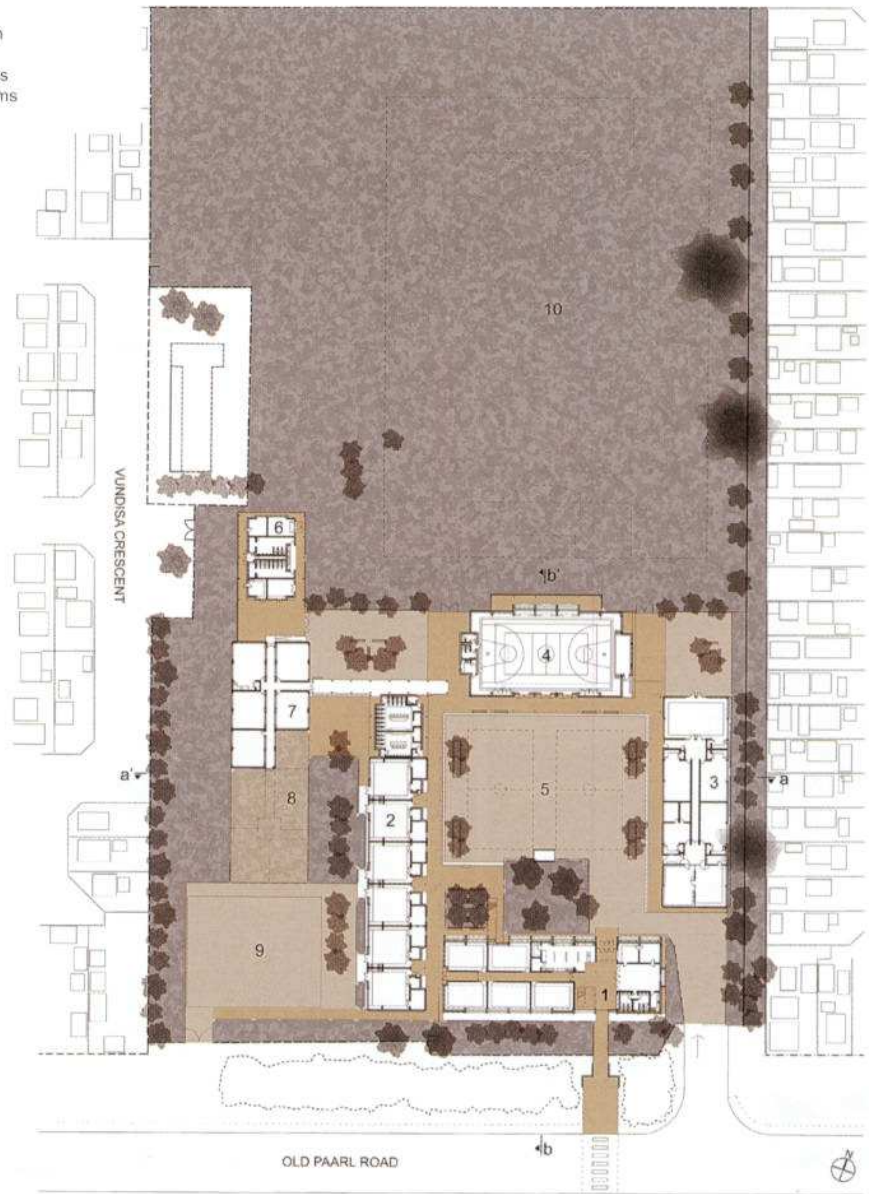
- 1 Administration and Classroom Building
- 2 Shed A: Specialist Classrooms
- 3 Shed B: Technology Classrooms
- 4 Hall
- 5 School Court
- 6 Utility Building
- 7 New Classroom Building
- 8 Future Extension
- 9 Staff Parking Area
- 10 Sports Field



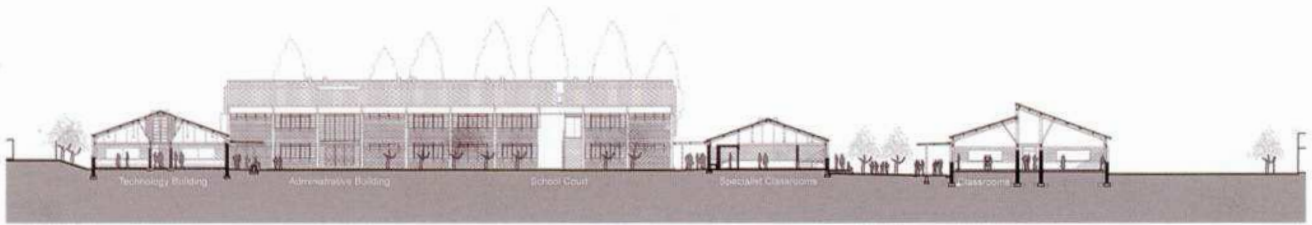
Section CC

important bridging space with the first-floor public entrance to the road. On this level, the library opens up to provide a larger formal reception space. The ground-level foyer absorbs daily learner and staff activities. It is directly associated with the staff area, where pivoting exhibition screens can provide an audiovisual space, and the hospitality classroom. The latter opens up to facilitate catering for large school events, open days and exhibitions.

The use of portal structures provides spatially generous, well-lit and well-ventilated classrooms and a simple structural ordering with pigmented concrete-block infill and steel window panels. A system of metal screens is used to deal with sun control and to provide security. Entrance areas are marked by brightly painted plastered walls. Emphasis on maintaining the garden and sports field has been of great benefit to the qualitative environment provided by the school.



Urban Context Plan



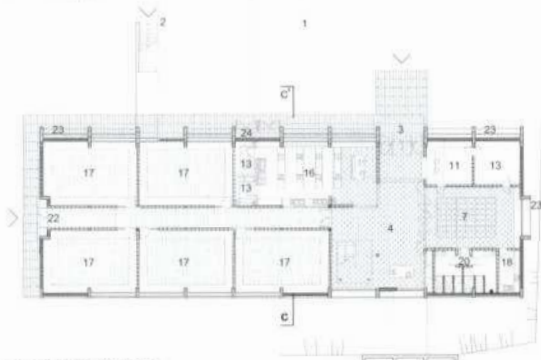
Sectional Elevation AA



Sectional Elevation BB

Legend

- | | | |
|---------------------------------|--------------------------|-----------------------|
| 1 School Court | 9 Vice-principal | 17 Classroom |
| 2 Access Stairs to School Court | 10 Secretary | 18 Kitchen |
| 3 Entrance | 11 Bursar | 19 Staff Toilets |
| 4 Foyer | 12 Sick Room | 20 Public Toilets |
| 5 Waiting Area | 13 Store | 21 Roof over Entrance |
| 6 Meeting/Working Room | 14 Strongroom | 22 Emergency Exit |
| 7 Staff Room | 15 Library | 23 Screening Element |
| 8 Principal | 16 Hospitality Classroom | 24 Gas Store |



Ground Floor Plan



First Floor Plan

